



jordan fishwick

MANCHESTER
Palatine Road



Palatine Road, Manchester, M20 3LQ

Offers Over £180,000



The Property

A two bedroom ground floor flat in a purpose built development which is ideally situated with easy access to the villages of both West Didsbury and Withington and close by The Christie Hospital. Comprising large private hallway with fitted storage space, bright and spacious open plan living room/modern fitted kitchen with appliances, bathroom with shower above. main bedroom with fitted wardrobes and a further second bedroom which could also be used as a home office. Features include electric heating and double glazing. Outside, there is a private garage sold with the flat and well maintained communal gardens and residents parking. The property is also located just a short stroll away from Burton Road in West Didsbury with local amenities.

Directions

M20 3LQ



- Two bedrooms
- Garage included
- Open plan living/kitchen
- Range of modern units
- Generous entrance hall
- Electric heating
- Double glazed windows
- Residents parking
- Communal gardens
- Excellent transport links

Postcode - M20 3LQ

EPC Rating - D

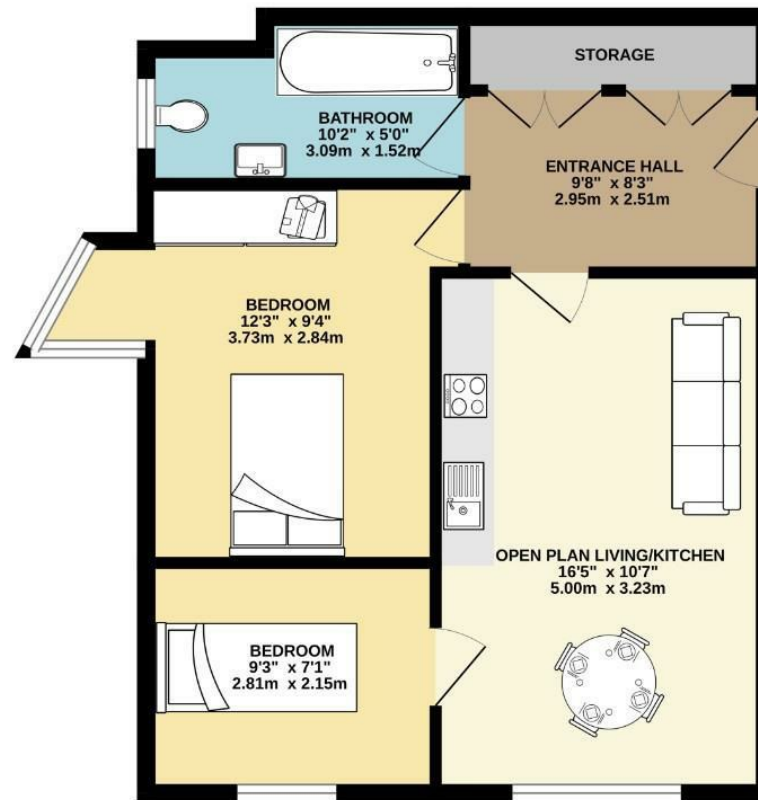
Floor Area - 504.00 sq ft

Local Authority - Manchester City Council

Council Tax - A



GROUND FLOOR
504 sq.ft. (46.8 sq.m.) approx.



TOTAL FLOOR AREA : 504 sq.ft. (46.8 sq.m.) approx.
Measurements are approximate. Not to scale. Illustrative purposes only.
Made with Metropix ©2024



These particulars are believed to be accurate but they are not guaranteed and do not form a contract. Neither Jordan Fishwick nor the vendor or lessor accept any responsibility in respect of these particulars, which are not intended to be statements or representations of fact and any intending purchaser or lessee must satisfy himself by inspection or otherwise as to the correctness of each of the statements contained in these particulars. Any floorplans on this brochure are for illustrative purposes only and are not necessarily to scale.

Offices also at: Wilmslow, Macclesfield, Hale, Sale, Chorlton, Glossop, Manchester & Salford

757-759 Wilmslow Road, Didsbury Village, Manchester

0161 445 4480

didsbury@jordanfishwick.co.uk
www.jordanfishwick.co.uk